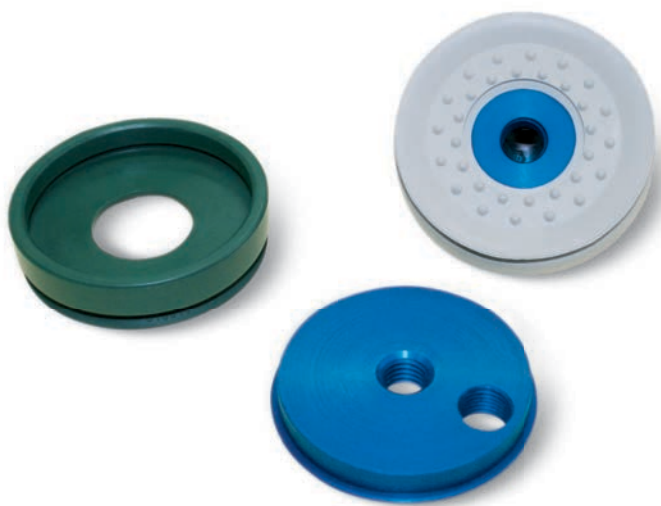


# FLAT CIRCULAR CUPS WITH SUPPORT



These cups have been designed, in particular, for handling metal sheets, glass, wooden panels, marble granite and other similar materials.

The shape of its lip allows a firm grip of the load to be handled, eliminating any oscillation and reducing the air volume contained within, thus allowing a quicker grip and release.

These cups are provided with cleats which, besides avoiding the load to bend in correspondence of the gripping point, also have the purpose to increase the friction surface with the vertically lifted load, preventing it from slipping.

They are normally available in the three standard compounds, but can be supplied in special compounds and in a minimum amount to be defined in the order, upon request.

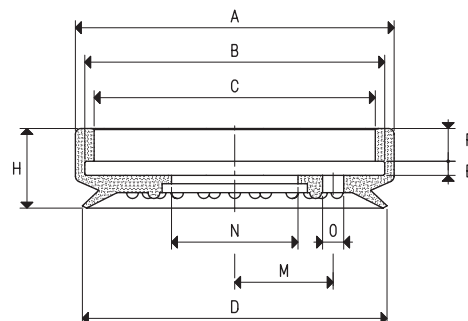
These cups can be cold-assembled, with no adhesives, on their anodised aluminium support equipped with a threaded hole in the centre to allow its fastening to the machine and, upon request, it can be supplied with a side hole with gas thread for the suction fitting.

These cups are extremely easy to replace; for the spare part, in fact, all you have to do is request the cup indicated in the table in the desired compound.

## CUPS

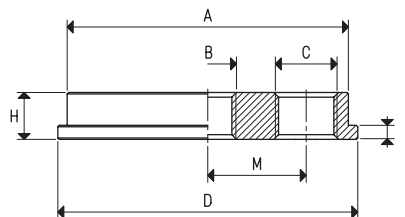
Art.	Force Kg	A Ø	B Ø	C Ø	D Ø	E	F	H	M	N Ø	O Ø
01 65 15 *	8.29	68	63	59	65	3	7	17	--	27	--
01 65 16 *	8.29	68	63	59	65	3	7	17	21	27	4.5

\* Complete the code indicating the compound: A= oil-resistant rubber; N= natural para rubber; S= silicon



## SUPPORTS

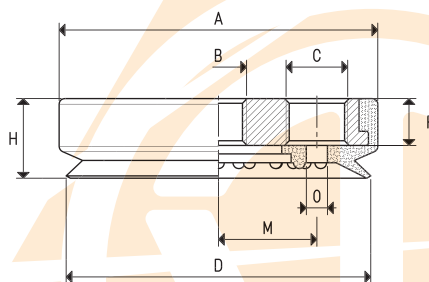
Art.	A Ø	B Ø	C Ø	D Ø	E	H	M	Cup art.	Support material	Weight g
00 08 32	60	M12	--	64	3	10	--	01 65 15	aluminium	80.6
00 02 36	60	M8	G1/4"	64	3	10	21	01 65 16	aluminium	78.1
00 06 13	60	M12	G1/4"	64	3	10	21	01 65 16	aluminium	77.1



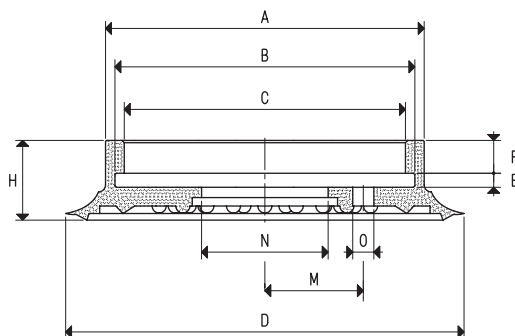
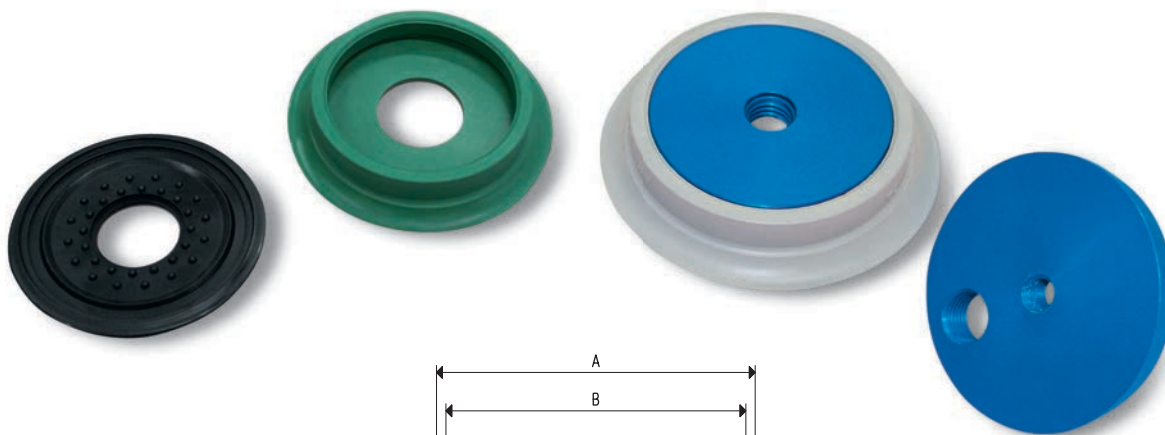
## CUPS WITH SUPPORTS

Art.	Force Kg	A Ø	B Ø	C Ø	D Ø	F	H	M	O Ø	Cup Art.	Support Art.	Weight g
08 65 15 *	8.29	69	M12	--	65	10	17	--	--	01 65 15	00 08 32	102.0
08 65 16 *	8.29	69	M8	G1/4"	65	10	17	21	4.5	01 65 16	00 02 36	100.0
08 65 17 *	8.29	69	M12	G1/4"	65	10	17	21	4.5	01 65 16	00 06 13	98.5

\* Complete the code indicating the compound: A= oil-resistant rubber; N= natural para rubber; S= silicon



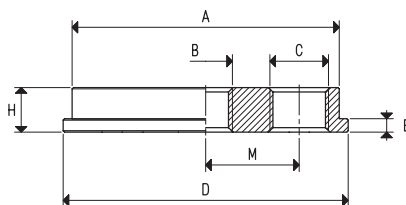
# FLAT CIRCULAR CUPS WITH SUPPORT



## CUPS

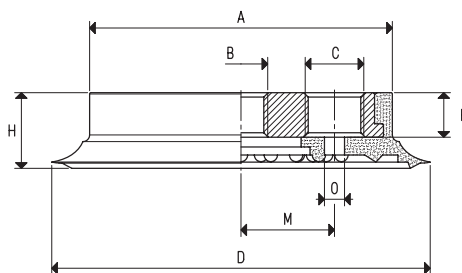
Art.	Force Kg	A Ø	B Ø	C Ø	D Ø	E	F	H	M	N Ø	O Ø
<b>01 85 15 *</b>	14.18	68	63	59	85	3	7	17	--	27	--
<b>01 85 16 *</b>	14.18	68	63	59	85	3	7	17	21	27	4.5

\* Complete the code indicating the compound: A= oil-resistant rubber; N= natural para rubber; S= silicon



## SUPPORTS

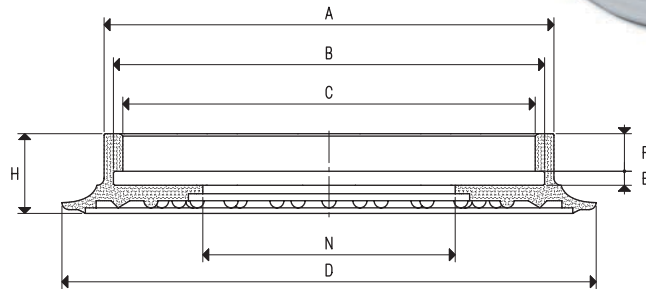
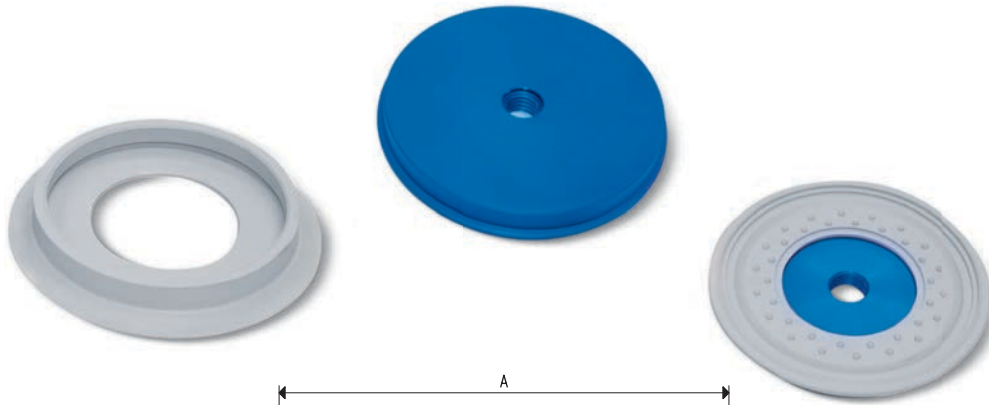
Art.	A Ø	B Ø	C Ø	D Ø	E	H	M	Cup art.	Support material	Weight g
<b>00 08 32</b>	60	M12	--	64	3	10	--	01 85 15	aluminium	80.6
<b>00 08 234</b>	60	G1/2"	--	64	3	10	--	01 85 15	aluminium	78.3
<b>00 08 233</b>	60	G3/4"	--	64	3	10	--	01 85 15	aluminium	77.3
<b>00 02 36</b>	60	M8	G1/4"	64	3	10	21	01 85 16	aluminium	78.1
<b>00 06 13</b>	60	M12	G1/4"	64	3	10	21	01 85 16	aluminium	77.1



## CUPS WITH SUPPORT

Art.	Force Kg	A Ø	B Ø	C Ø	D Ø	F	H	M	O Ø	Cup Art.	Support Art.	Weight g
<b>08 85 15 *</b>	14.18	69	M12	--	85	10	17	--	--	01 85 15	00 08 32	110.3
<b>08 85 15 1/2" *</b>	14.18	69	G1/2"	--	85	10	17	--	--	01 85 15	00 08 234	108.0
<b>08 85 15 3/4" *</b>	14.18	69	G3/4"	--	85	10	17	--	--	01 85 15	00 08 233	107.0
<b>08 85 16 *</b>	14.18	69	M8	G1/4"	85	10	17	21	4.5	01 85 16	00 02 36	107.7
<b>08 85 17 *</b>	14.18	69	M12	G1/4"	85	10	17	21	4.5	01 85 16	00 06 13	106.7

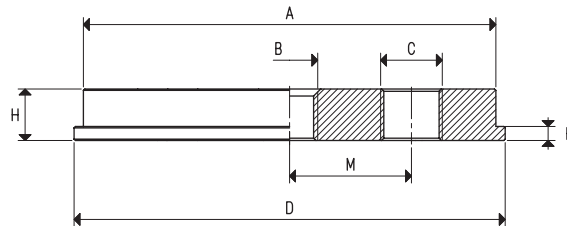
\* Complete the code indicating the compound: A= oil-resistant rubber; N= natural para rubber; S= silicon



CUPS

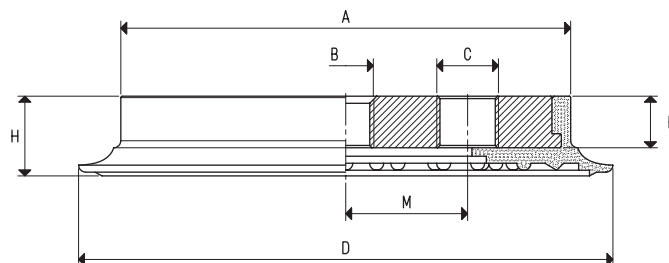
Art.	Force Kg	A ∅	B ∅	C ∅	D ∅	E	F	H	N
01 110 10 *	23.74	96	91	87	114	3	8	17	54

\* Complete the code indicating the compound: A= oil-resistant rubber; N= natural para rubber; S= silicon



SUPPORTS

Art.	A ∅	B ∅	C ∅	D ∅	E	H	M	Cup art.	Support material	Weight g
00 08 33	88	M12	--	92	3	11	--	01 110 10	aluminium	188.9
00 02 37	88	M8	G1/4"	92	3	11	26	01 110 10	aluminium	188.8
00 06 14	88	M12	G1/4"	92	3	11	26	01 110 10	aluminium	185.8
00 08 123	88	G3/8"	--	92	3	11	--	01 110 10	aluminium	186.1

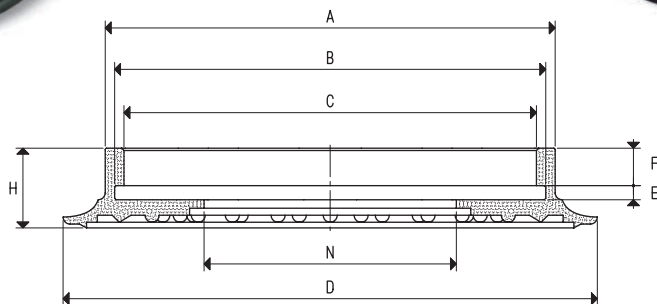


CUPS WITH SUPPORT

Art.	Force Kg	A ∅	B ∅	C ∅	D ∅	F	H	M	Cup Art.	Support Art.	Weight g
08 110 10 *	23.74	97	M12	--	114	11	17	--	01 110 10	00 08 33	233.2
08 110 11 *	23.74	97	M8	G1/4"	114	11	17	26	01 110 10	00 02 37	233.1
08 110 12 *	23.74	97	M12	G1/4"	114	11	17	26	01 110 10	00 06 14	230.1
08 110 13 *	23.74	97	G3/8"	--	114	11	17	--	01 110 10	00 08 123	230.4

\* Complete the code indicating the compound: A= oil-resistant rubber; N= natural para rubber; S= silicon

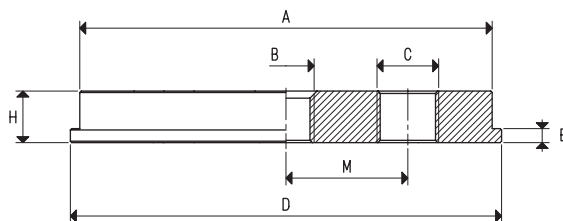
# FLAT CIRCULAR CUPS WITH SUPPORT



## CUPS

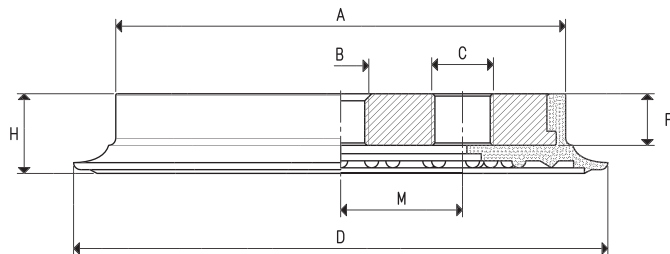
Art.	Force Kg	A Ø	B Ø	C Ø	D Ø	E	F	H	N
01 150 10 *	45.00	133	125	118	154	4	11	23	64

\* Complete the code indicating the compound: A= oil-resistant rubber; N= natural para rubber; S= silicon



## SUPPORTS

Art.	A Ø	B Ø	C Ø	D Ø	E	H	M	Cup art.	Support material	Weight g
00 08 35	120	M12	--	127	4	15	--	01 150 10	aluminium	471.3
00 08 107	120	M12	G3/8"	127	4	15	30	01 150 10	aluminium	476.9
00 08 119	120	G3/8"	--	127	4	15	--	01 150 10	aluminium	478.9
00 08 145	120	G3/8"	G3/8"	127	4	15	27	01 150 10	aluminium	471.9
00 06 15	120	M12	G1/4"	127	4	15	30	01 150 10	aluminium	476.3



## CUPS WITH SUPPORT

Art.	Force Kg	A Ø	B Ø	C Ø	D Ø	F	H	M	Cup Art.	Support Art.	Weight g
08 150 10 *	45.00	135	M12	--	154	15	23	--	01 150 10	00 08 35	583.3
08 150 12 *	45.00	135	M12	G3/8"	154	15	23	30	01 150 10	00 08 107	588.9
08 150 13 *	45.00	135	G3/8"	--	154	15	23	--	01 150 10	00 08 119	590.9
08 150 14 *	45.00	135	G3/8"	G3/8"	154	15	23	27	01 150 10	00 08 145	583.9
08 150 16 *	45.00	135	M12	G1/4"	154	15	23	30	01 150 10	00 06 15	588.3

\* Complete the code indicating the compound: A= oil-resistant rubber; N= natural para rubber; S= silicon

3D drawings available at [www.vuototecnica.net](http://www.vuototecnica.net)